



SURPHASER® — 3D LASER SCANNER

The Highest Accuracy & Resolution in a long range 3D Scanner

Known for its unsurpassed accuracy and scan quality, the Surphaser line of scanners offers both short range and medium range models ideal for use in reverse engineering, dimensional control, historical preservation, architecture, and forensics.

SURPHASER® 25HSX

- Sub-millimeter accuracy scanners with scan rate of up to 1.2 million points per second
- Designed to operate in industrial and outdoors environments
- Software allows export of clean and accurate data sets into PolyWorks®, RapidForm®, Geomagic®, Cyclone®, RealWorks® and other applications for processing
- Portable and easy to move around - fits into optional carrying case approved for cabin luggage for most domestic airlines

FOR 3D SCANNER DEVELOPERS AND MANUFACTURERS:

OEM products based on advanced Surphaser technology - range unit and software. Software options include everything for rapid development of customized 3D laser scanner system best suited for particular application.

SURPHASER® 25HSX CONFIGURATION OPTIONS

Configuration	SR	IR_X	ER_XQ	ER_XS
Ambiguity Range, m	46	70	70	140
Recommended Work Range, m	0.2-5	0.4-30	1.5-50	1-70
Range Noise, 1 sigma, mm	0.07@2m	0.1@3m	0.2@8m	0.5@8m
Range Uncertainty, mm	< 0.3@3m	< 0.5@5m	< 1@15m	<1@15m



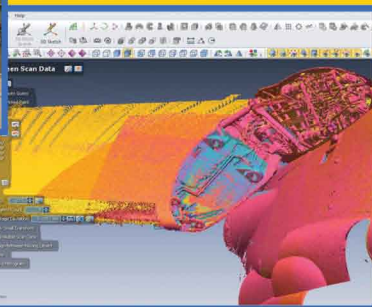
SURPHASER® 25HSX CASE STUDY I

C2: WING HINGE STUDY



Scan time: **3 hours**

Processing time:
2 hours for polygon model creation

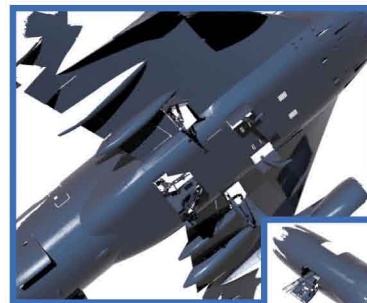


Processing time:
3 hours for solid modeling

Images courtesy of Mimic Studios, Inc.

SURPHASER® 25HSX CASE STUDY II

BOEING 747: FUSELAGE SURFACE MODELING



12 scans,
380 million points
Scan time: **3 hours**

Processing time:
5 hours for polygon model creation



6 hours CAD modeling fuselage underside skin from scan data

Images courtesy of Mimic Studios, Inc.