

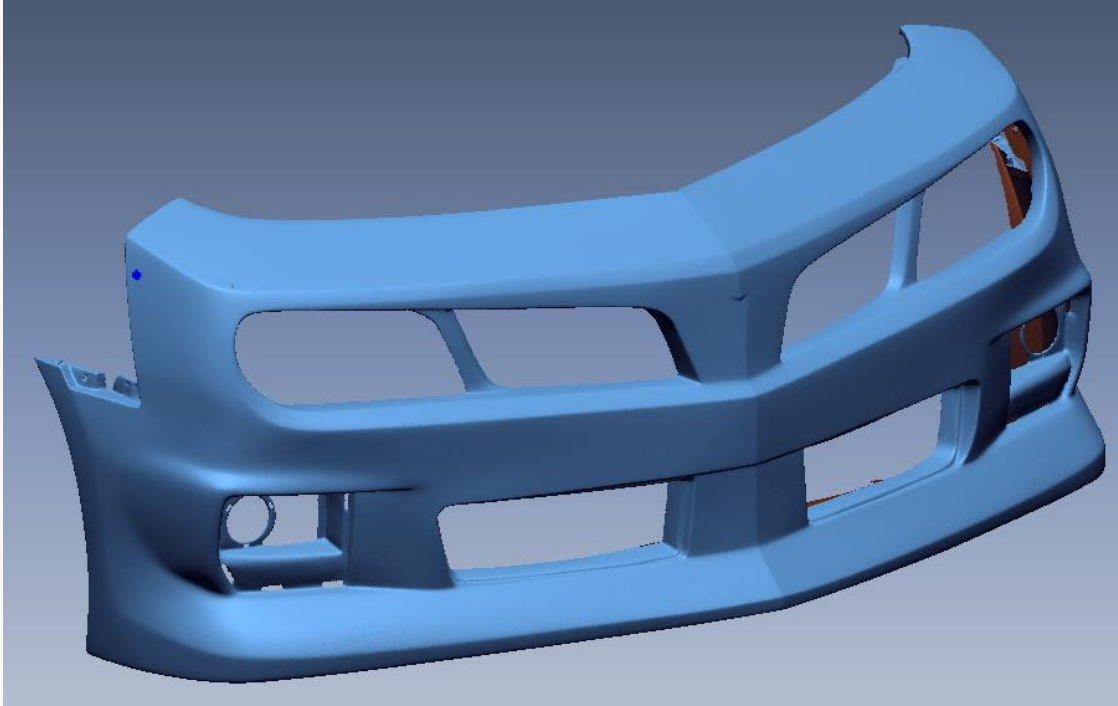


The Trans Am Lives On

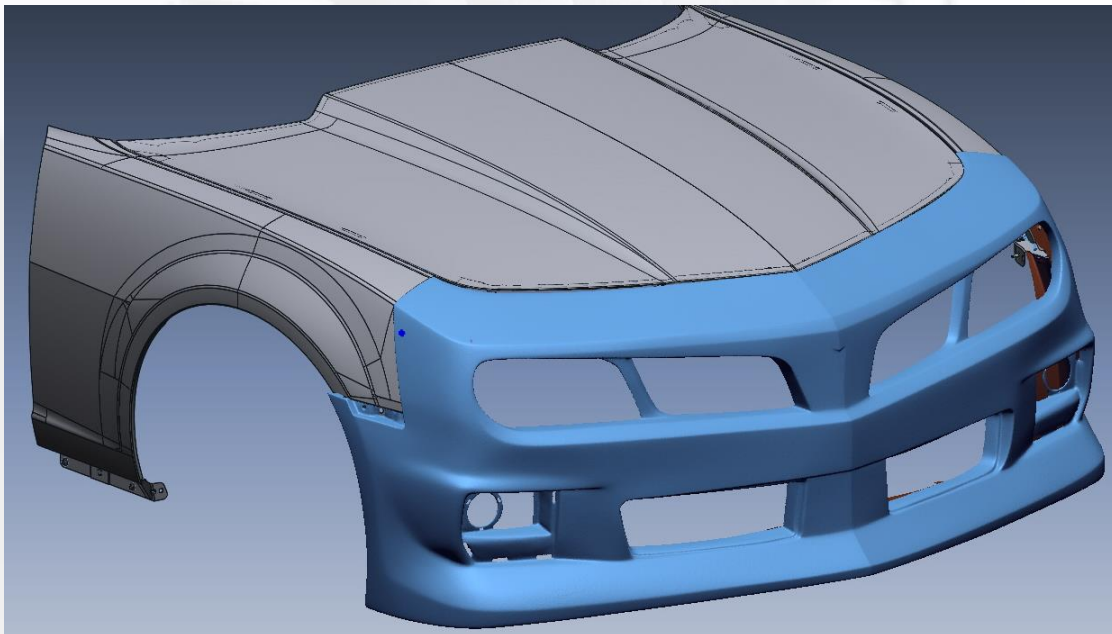
EMS was contracted to 3D Scan master models for a company that converts the current Chevrolet Camaro into a Pontiac Trans Am. EMS 3D Scanned the front fascia with their Creaform MetraSCAN 3D Scanner. The MetraSCAN 3D Scanner is optically tracked with a camera system making it extremely fast and accurate on medium size parts.



3D Scanning of a Trans Am Generation 2 front fascia master model



3D Scan data of the Fascia



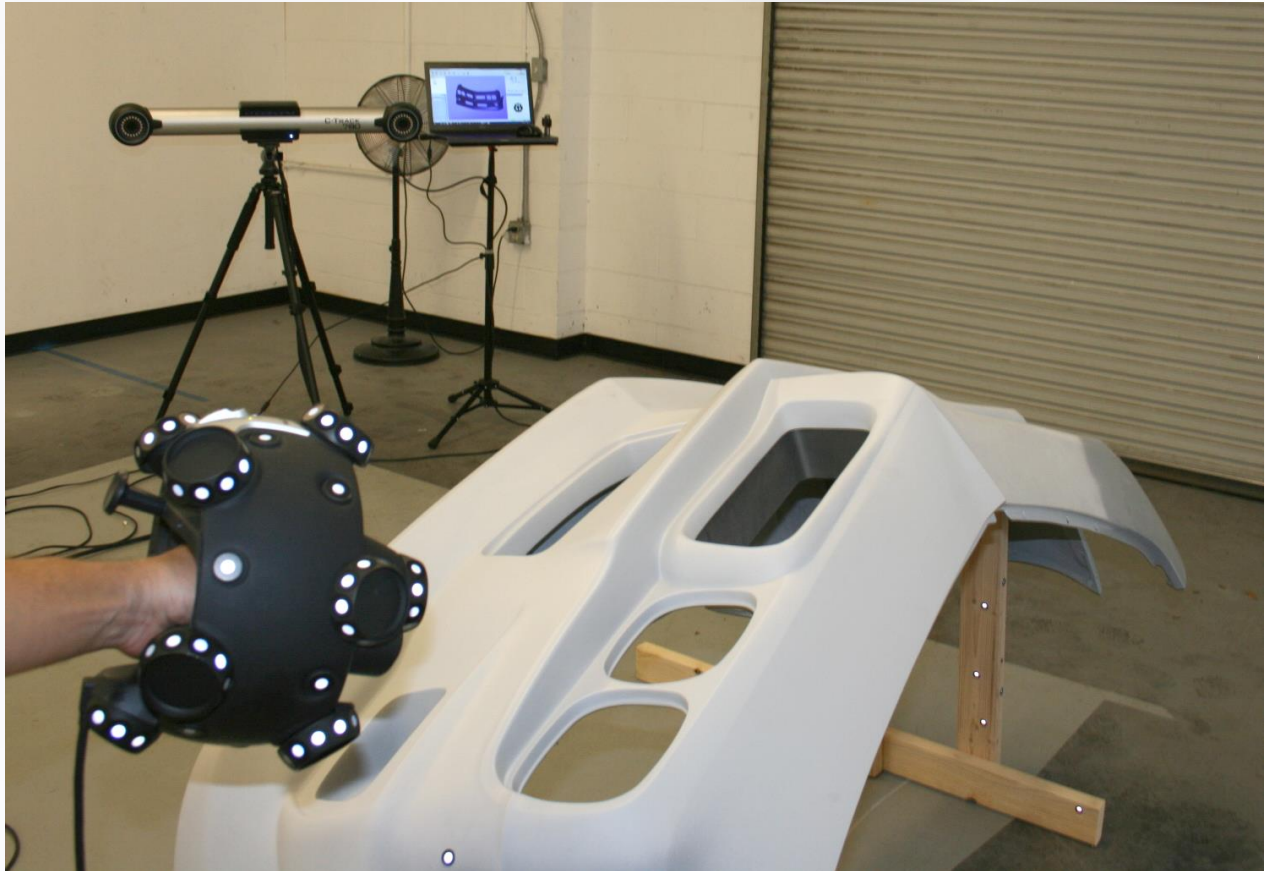
3D Scan data aligned with the current Camero body panels to insure proper fit and alignment



The 3D Scan data was then used to generate “Class A” surfaces for the manufacturing process. In addition, high resolution renderings were created showing the final look of the front of the car



Final production vehicle



3D Scanning a Generation 1 Trans Am front fascia master pattern with a Creaform MetraSCAN 3D Scanner



Class A surface model from 3D Scan data of a Generation 1 Trans Am master model.