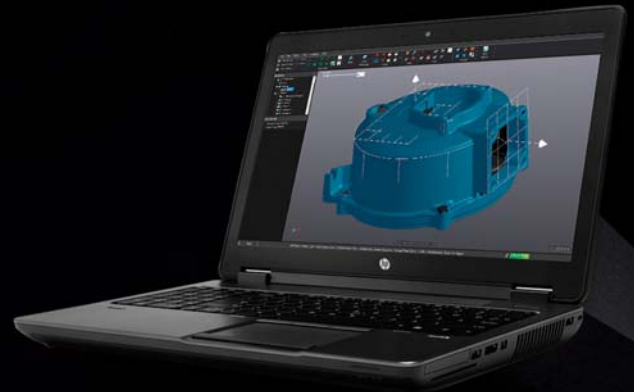


# VXmodel™

## SCAN-TO-CAD SOFTWARE MODULE

VXmodel is a post-treatment software that directly integrates into VXelements, Creafom's 3D software platform, and allows the finalization of 3D scan data to use directly in any CAD or 3D printing software. VXmodel provides the simplest and fastest path from 3D scans to your computer-aided design or additive manufacturing workflow.

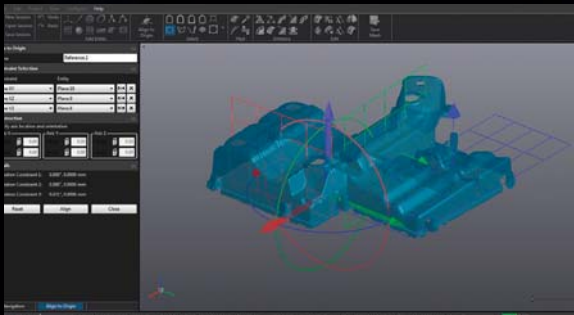
A great addition to the Creafom 3D scanners, VXmodel is simple but powerful, including only the features necessary to complement your CAD software. You already have all the design and modeling capabilities in your CAD software: VXmodel simply provides the tools you need for a quick and seamless integration into your scan-based design process.



## FEATURES AND BENEFITS

Since it is fully integrated into VXelements, VXmodel can directly build on its automatically generated mesh. It presents the functionalities you need to finalize your file fast and bring it to your CAD workflow.

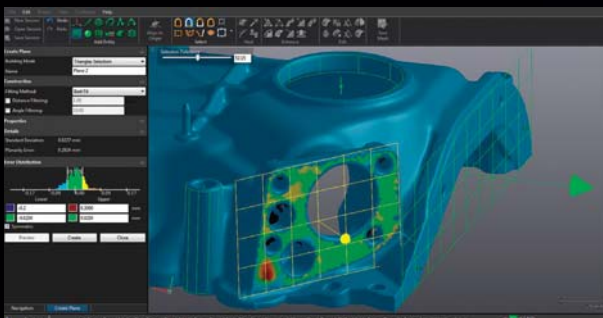
### ALIGNMENT



Before starting to reverse engineer the object, the scan must first be aligned to the coordinate system suiting your design requirements.

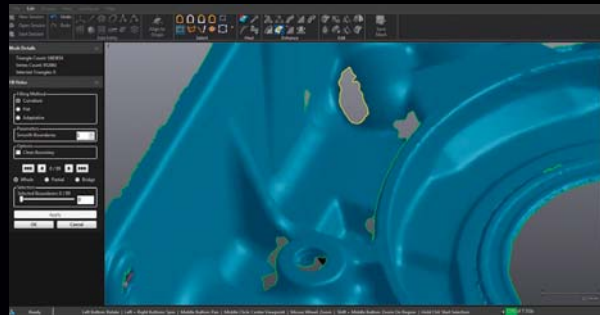
With the highly flexible VXmodel alignment tool, you can simply constraint your scan using datums/entities and you will then start your design process on a strong foundation.

### GEOMETRICAL ENTITIES & CROSS-SECTIONS



Use your 3D scan as a reference for your design: extract all the information you need from the mesh by creating geometrical entities, curves, cross-sections and even NURBS surfaces for characterizing freeform surfaces. The highly flexible, user-friendly VXmodel interface lets you quickly segment the mesh into all of the primitive entities required to complete the design in your CAD software.

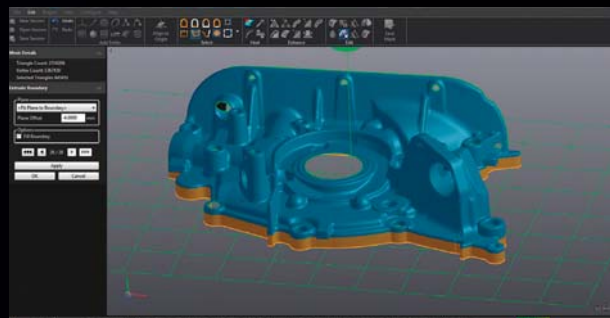
### MESH IMPROVEMENT



VXmodel enables you to improve the 3D scan mesh and make it more suitable to the CAD or 3D printing process. Simple but powerful tools to make sure you have the perfect file to start your reverse engineering or 3D printing process.

**Available tools:** Heal mesh | Fix normals | Hole filling, defeature | Decimate/Refine mesh | Smooth mesh | Smooth boundary | And more...

### MESH EDITING

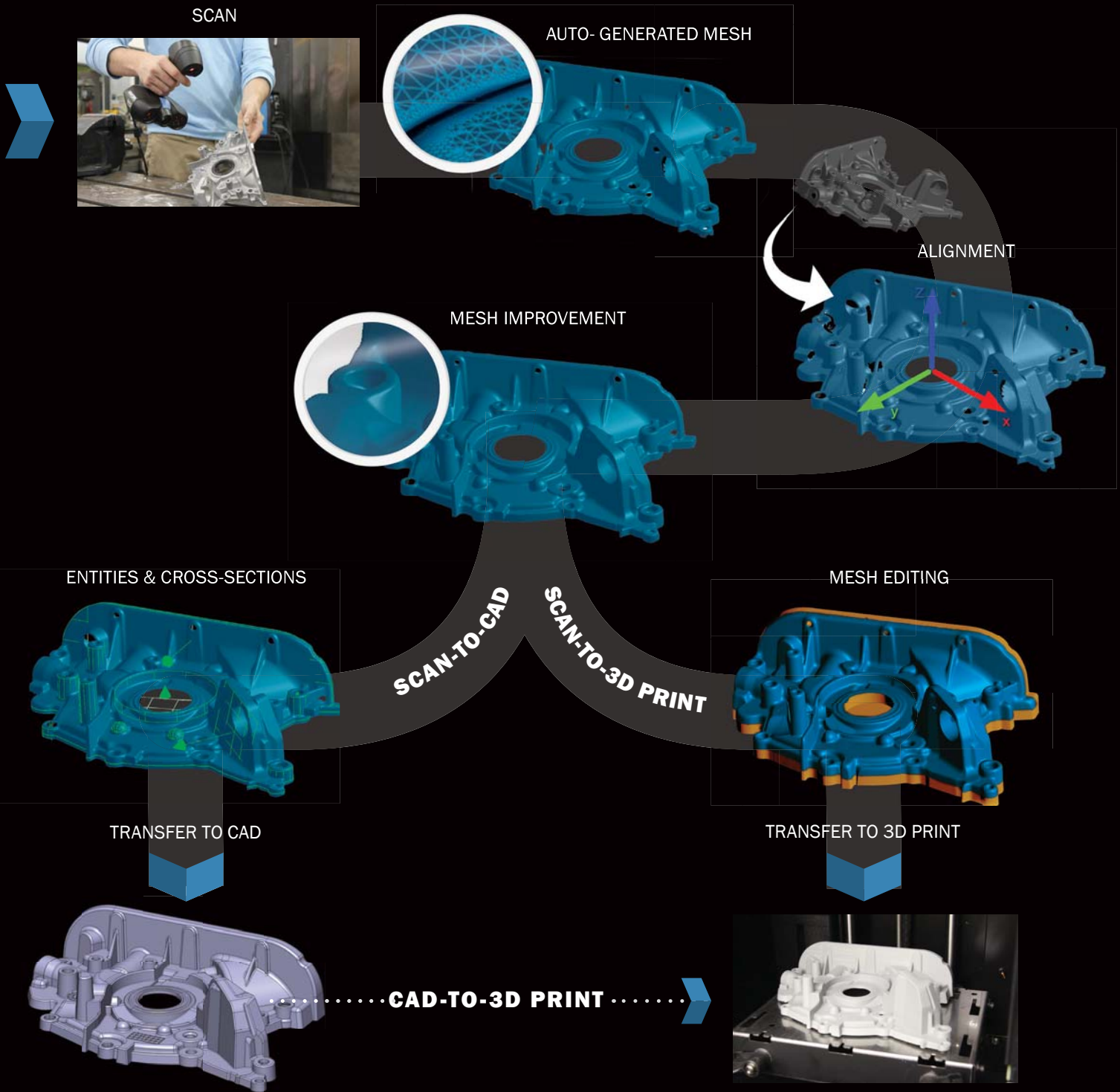


VXmodel will help you modify the 3D scan mesh, make it watertight and quickly generate print-ready files for your rapid manufacturing workflow.

**Available tools:** Scale mesh | Shell/Offset mesh | Make watertight mesh | Boundary extrusion | Divide/Cut mesh by plane/Curve | And more...

# SIMPLIFIED SCAN-TO-CAD WORKFLOW WITH VXMODEL

VXmodel fully integrates with Creaform 3D scanners, while providing only what you need and nothing more: the simplest and fastest path from your 3D scans to your CAD or additive manufacturing workflow!



**CREAFORM**

**Creaform inc. (Head Office)**  
5825, rue St-Georges  
Lévis, Québec, Canada G6V 4L2  
Tel.: 1.418.833.4446 | Fax: 1.418.833.9588  
[info@craform3d.com](mailto:info@craform3d.com) | [www.craform3d.com](http://www.craform3d.com)

**AMETEK**  
ULTRA PRECISION TECHNOLOGIES

Authorized Distributor